



Community Renewable Energy Co-operatives

Jon Halle

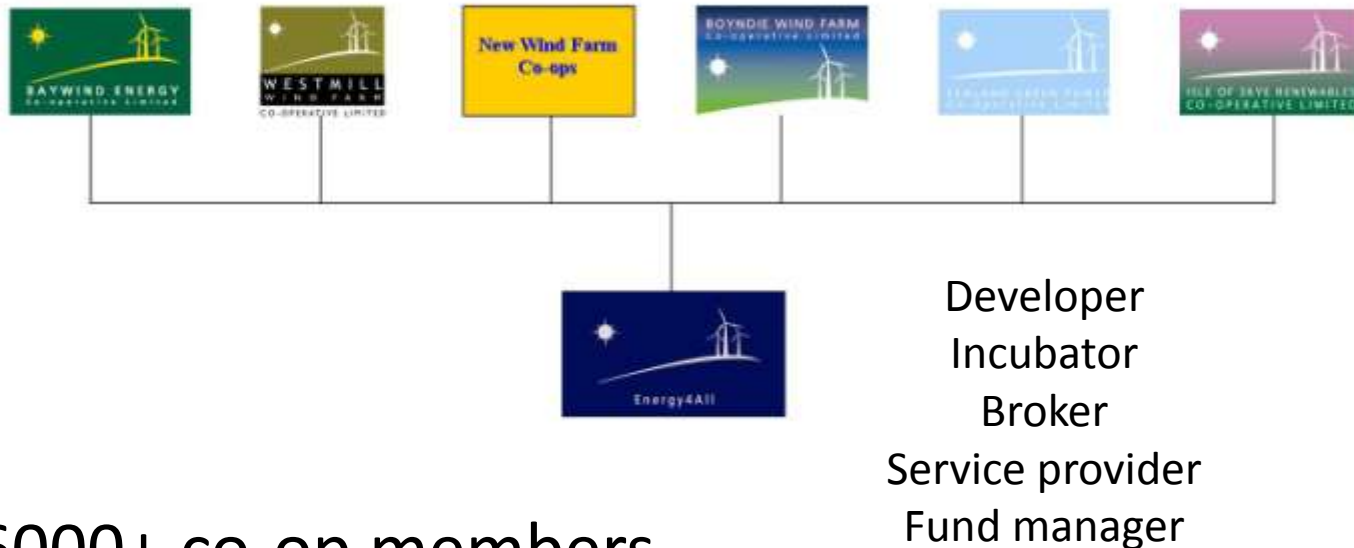
jon@shareenergy.coop

www.shareenergy.coop

- Baywind (1997)
- E4A est by Baywind 2002
- 10 wind co-ops
- Expertise large scale wind
- Main UK incubator of community-scale renewable energy
- Pioneered co-op delivery model in UK



Energy4All



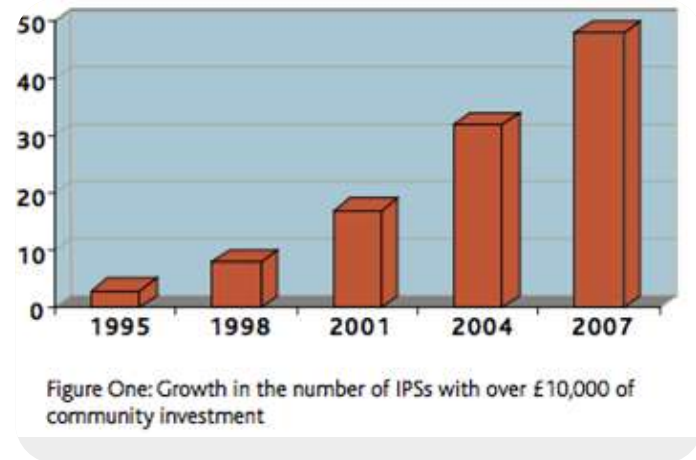
- 6000+ co-op members
- £15m invested
- 19 MW installed
- Energy Prospects: £1m development fund for 4MW+ projects

Energy4All



- CO₂ saving - the right scale
- Support local economy, local control
- Engage people with renewables
- A stable and proven model

Community Ownership



- One member one vote
- Follow co-operative principles
- Industrial and Provident Society form
- Can raise shares from the public
- Create local, ethical investment opportunity
- £250-£20,000 investment per member
- 4-10% return on investment
- Replicable model (low to no grant)

Co-operatives



- First 100% community- owned wind farm in SE England
- 5 x 1.3MW turbines

Westmill Wind Co-op



FITS and RHI



Enable new scales and models

Medium scale wind

Smaller wind farms, single generators or installations in lower wind speed areas



Biomass projects

Heat and power or just heat from locally sourced wood fuel.



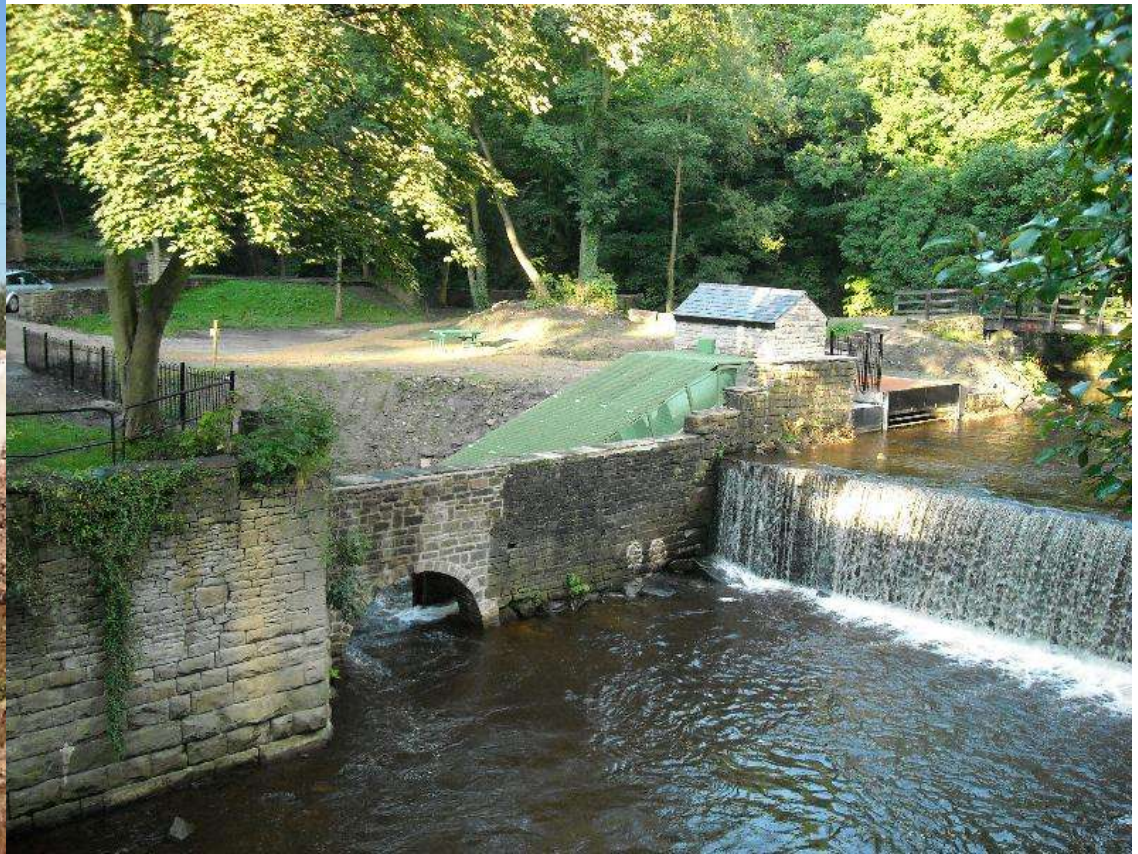
Anaerobic digestion

Biogas digesters using waste from local homes, food businesses and farms



Small hydro

Run-of-river hydro schemes



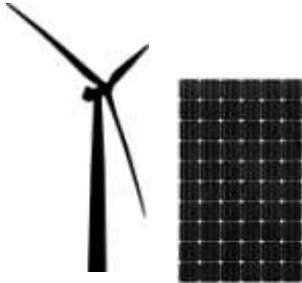
Community PV

Large roof mounted arrays on community or other buildings





Spin-off



Range of FIT renewables, 20kW-1MW



Grassroots community ownership



Local, green co-op investment

shareenergy.coop



shareenergy.coop

Key Benefits for landowners

- Low or zero capital requirement from landowner
- Smaller and more marginal projects are possible
- Community involvement may make planning easier
- Wider benefits of community connections
- A trustworthy development partner

shareenergy.coop

1.5MW turbines, Bridgnorth, Shropshire

- 2 turbines
- Currently pre- planning
- Development costs ~£100,000
- Capital cost £3,000,000
- 20 yr lease
- Landowner will receive guaranteed rental plus percentage
- Members get 7-10% return
- Community fund £15k+

shareenergy.coop



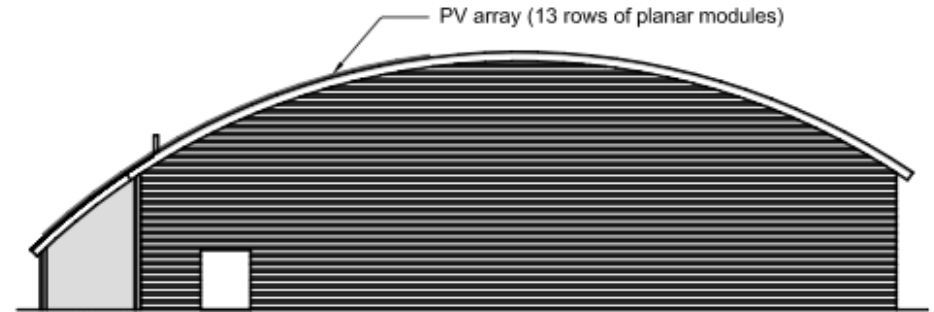
Biomass ESCo, Woolhope Dome, Herefordshire

- Project will own boilers on clients premises
- Guaranteed savings over fossil fuel
- Locally sourced woodchip from unmanaged or undermanaged woodland
- Premium paid for local biomass
- Enables grant money for landowners
- No capital cost to landowners
- Share offer launches October 2011
- Members get 7-8% return

shareenergy.coop

50kW PV, Leominster, Herefordshire

East Elevation (1:300)

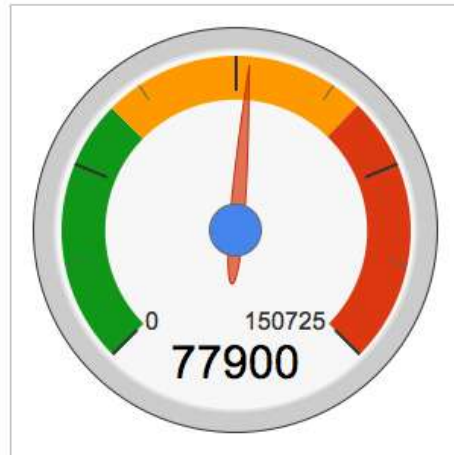


- Leisure centre
- Capital cost £150,000
- 25 yr lease
- Planning permission received
- Landowner will receive low cost electricity
- 95%+ of electricity used on-site
- Leisure centre members can invest in co-operative
- Members get 6% return

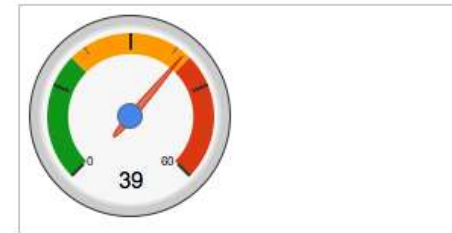
shareenergy.coop



Amount we've raised (as of 26/11/2011)



Days elapsed of share offer (today)



Google Docs

Days left	21
Members so far	56

www.shareenergy.coop/leominstersolar



Jon Halle

jon@shareenergy.coop